



# GAT MONTHLY MEMBERSHIP PROGRESS REPORT

Results as of: 5/31/2023

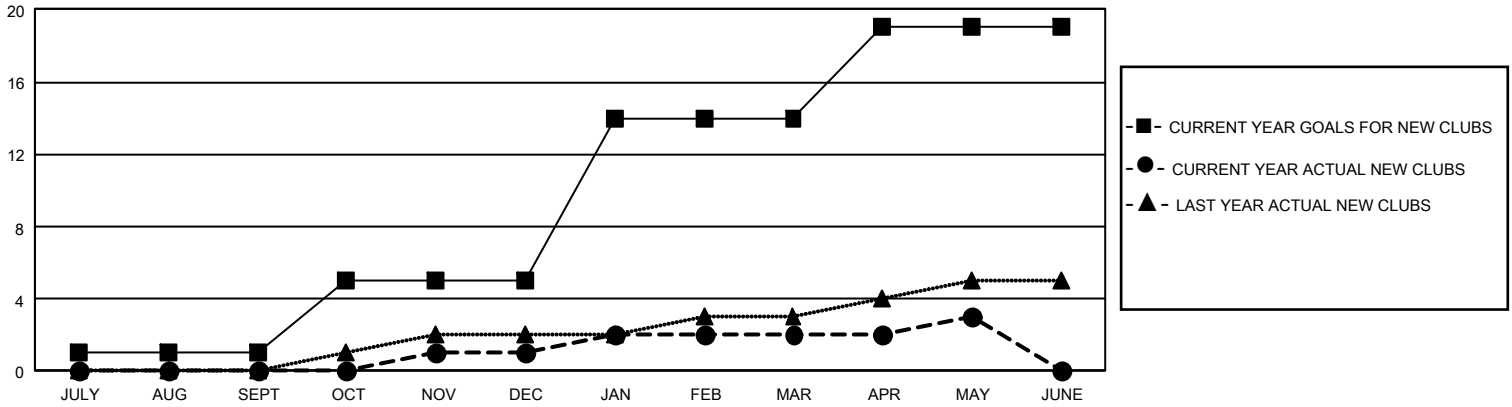
## GMT Constitutional Area 3, Group G

REPORT DOES NOT INCLUDE CLUBS IN UNDISTRICTED AREAS.

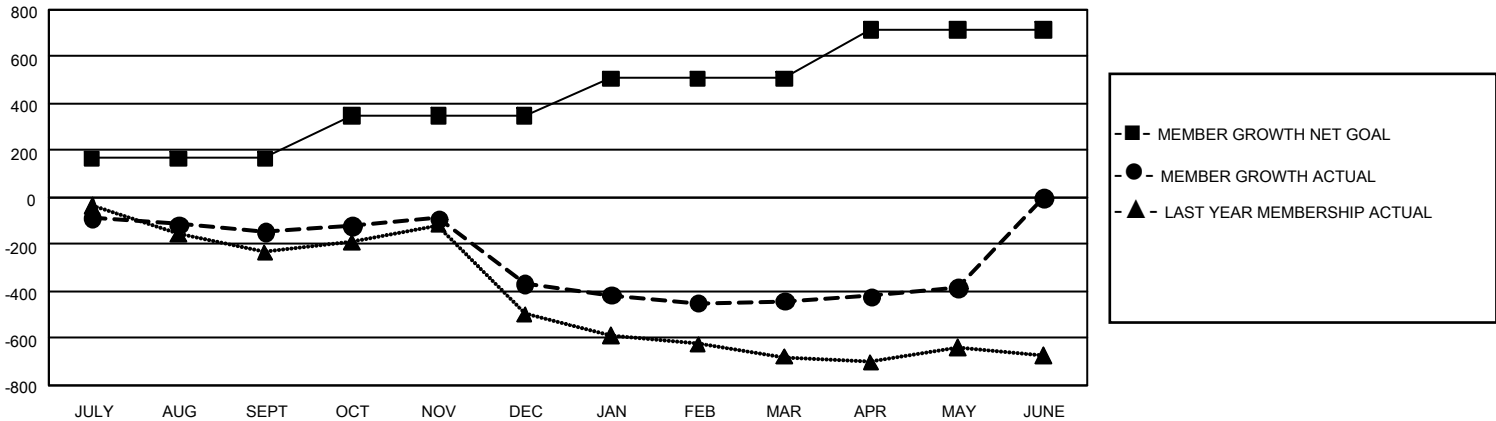
Clubs			
RESULTS FOR 2022-2023			
QUARTER	NEW CLUB GOAL	NEW CLUBS	DROPPED CLUBS
JULY/AUG/SEPT	3	0	6
OCT/NOV/DEC	12	1	13
JAN/FEB/MAR	27	1	4
APR/MAY/JUNE	15	1	0

Members			
RESULTS FOR 2022-2023			
QUARTER	MEMBER GROWTH NET GOAL	MEMBER GROWTH ACTUAL	DROPPED MEMBERS ACTUAL (including transfers)
JULY/AUG/SEPT	167	224	326
OCT/NOV/DEC	182	352	532
JAN/FEB/MAR	158	271	300
APR/MAY/JUNE	206	293	223

GOALS AND ACTUAL NEW CLUBS CUMULATIVE



GOALS AND ACTUAL MEMBERS CUMULATIVE



<b>DROPPED CLUBS: 23</b>	239 CLUBS OF 496 ADDED 1 OR MORE NEW MEMBERS	<b>GENDER DISTRIBUTION</b>	
		MALE 5,734 (53.37%)	FEMALE 5,009 (46.62%)
<b>DROPPED MEMBERS</b>		NON BINARY 0 (0.00%)	PREFER NOT TO ANSWER 1 (0.01%)
DECEASED 105	<a href="#">CLICK HERE FOR CUMULATIVE MEMBERSHIP DATA</a>	TOTAL FAMILY UNIT MEMBERS 4,658	
CLUB CANCELLED 149		FAMILY MEMBERS PAYING HALF DUES 2,456	
OTHER 1,127			
<b>TOTAL 1,381</b>			